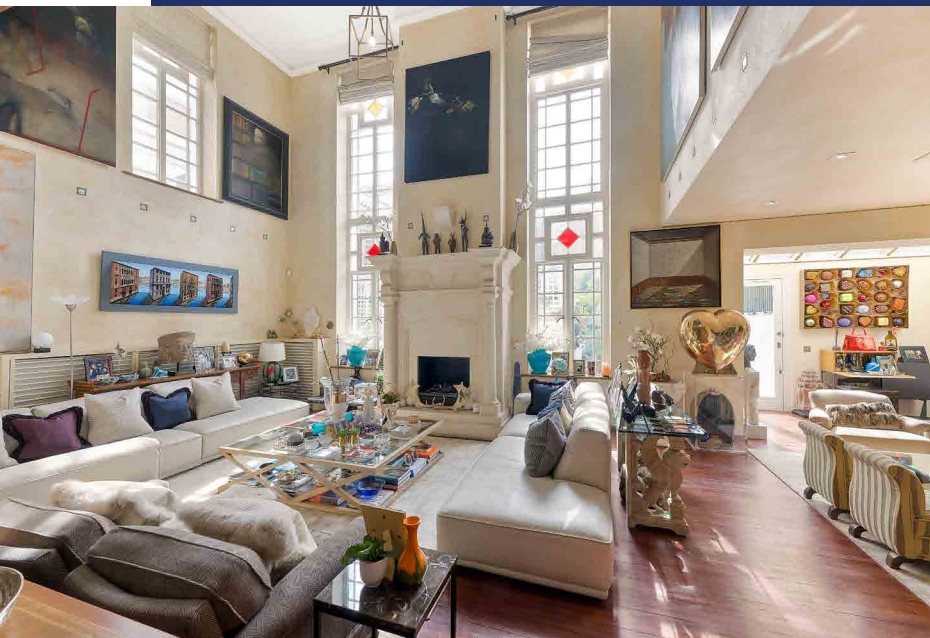


THE OLD COURT HOUSE

JUSTICE WALK
C H E L S E A

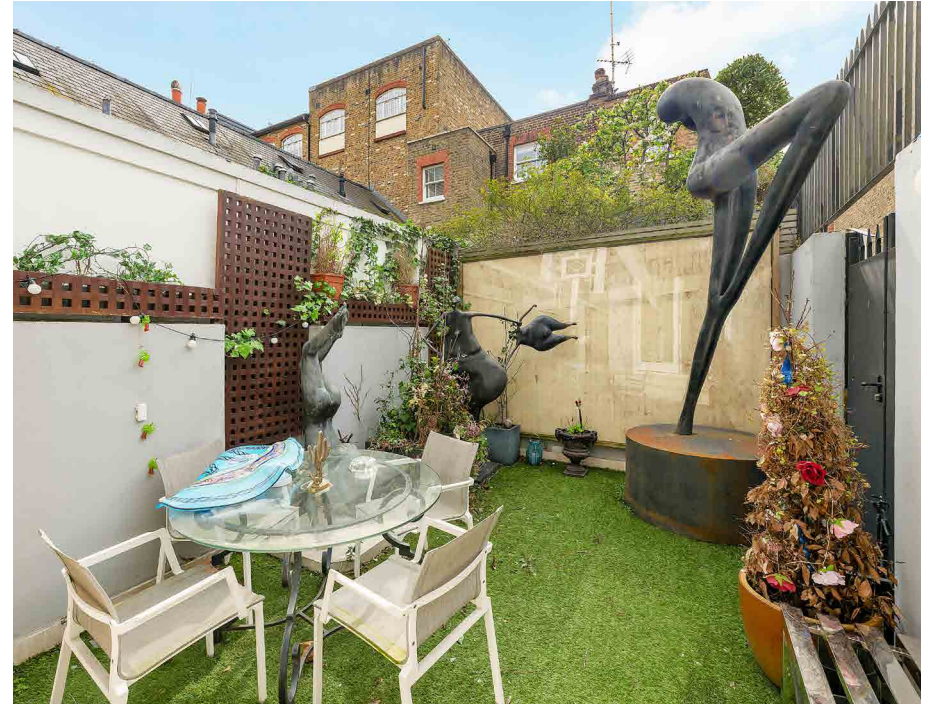


QUINTESSENTIAL OLD CHELSEA

Fortis Advisors are delighted to bring to market this unique and charming home of historic interest discreetly located in a quiet enclave in 'old Chelsea' between the famed Kings Road and the River Thames.

A key feature to the house is the striking reception room with extraordinary ceiling heights of 6.5m, perfect for entertaining.





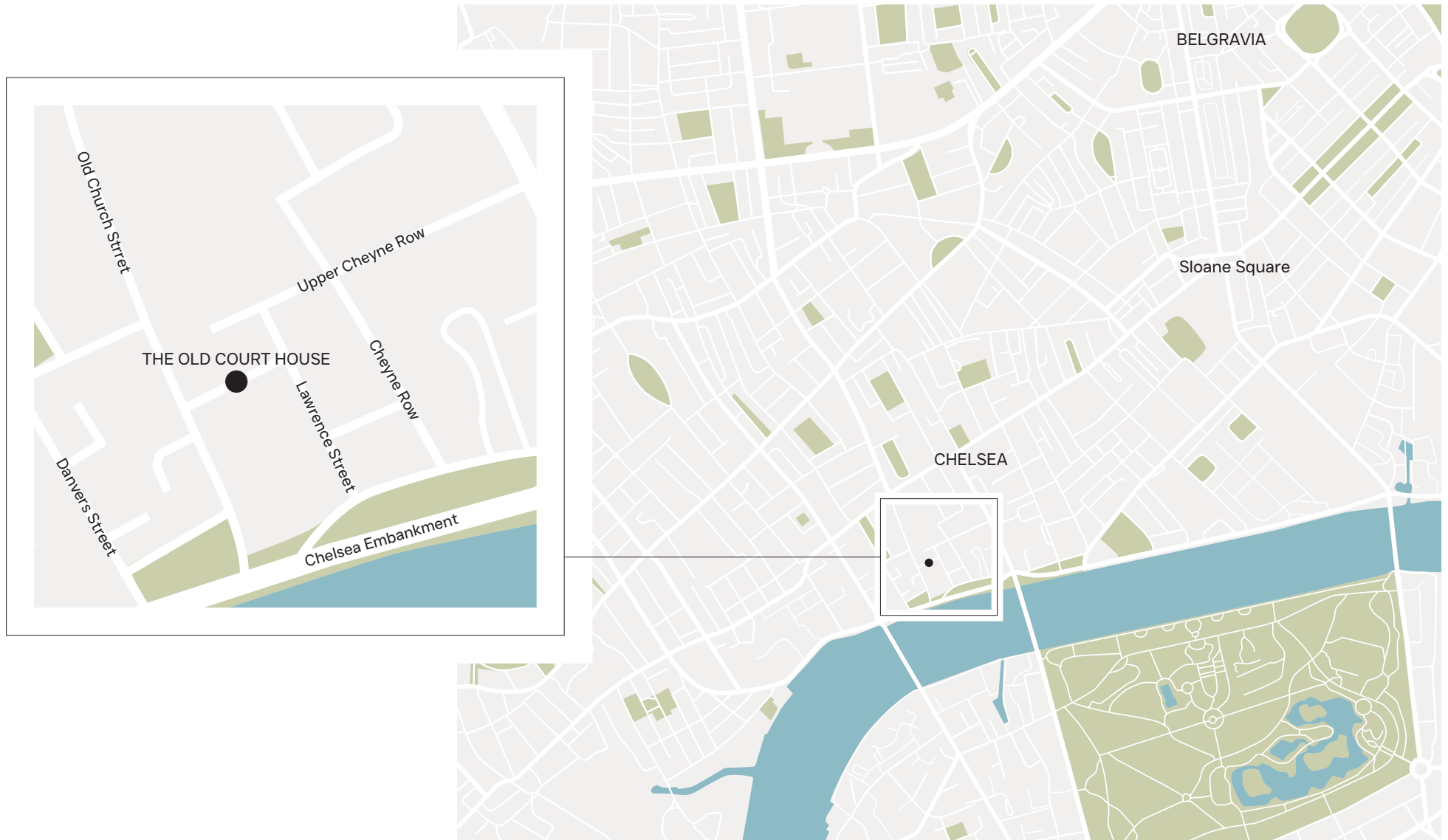
- Entrance hall
- Double height reception room
- Principal bedroom with two ensuite bathrooms and two dressing rooms
- Three further bedrooms with three ensuite bathrooms
- Staff bedroom with bathroom
- Kitchen with breakfast area
- Dining room
- Gym
- Utility room
- Two cloakrooms
- Patio
- Garden







THE LOCATION



THE OLD COURT HOUSE JUSTICE WALK CHELSEA SW3

Approximate size:
5279 sq ft/490.42 sq metres
(excluding eaves storage and voids)
Eaves storage area:
279 sq ft/25.92 sq metres

TERMS

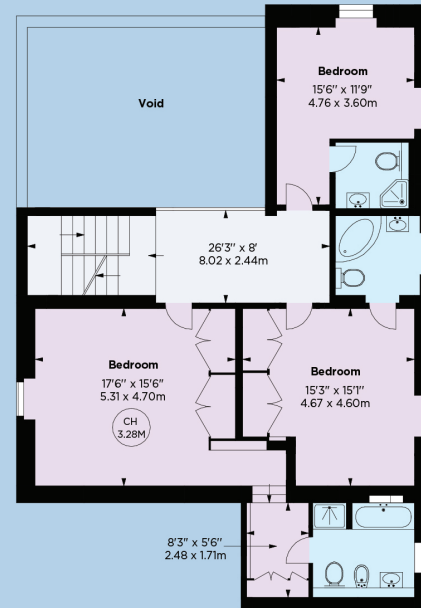
TENURE
Freehold

LOCAL AUTHORITY
Royal Borough of Kensington and Chelsea

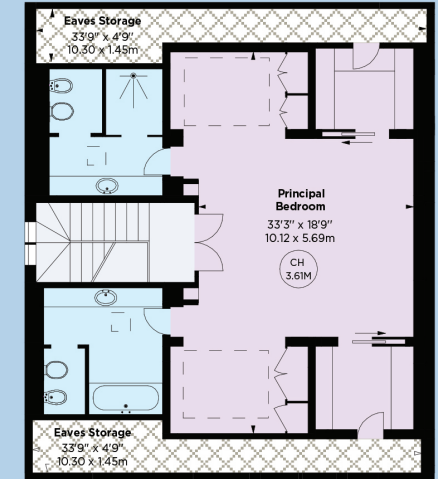
ENERGY PERFORMANCE CERTIFICATE (EPC): D

This plan is for layout guidance only.
Not drawn to scale unless stated. Windows and door openings are approximate. Whilst every care is taken in the preparation of this plan, please check all dimensions, shapes and compass bearings before making any decisions reliant upon them.

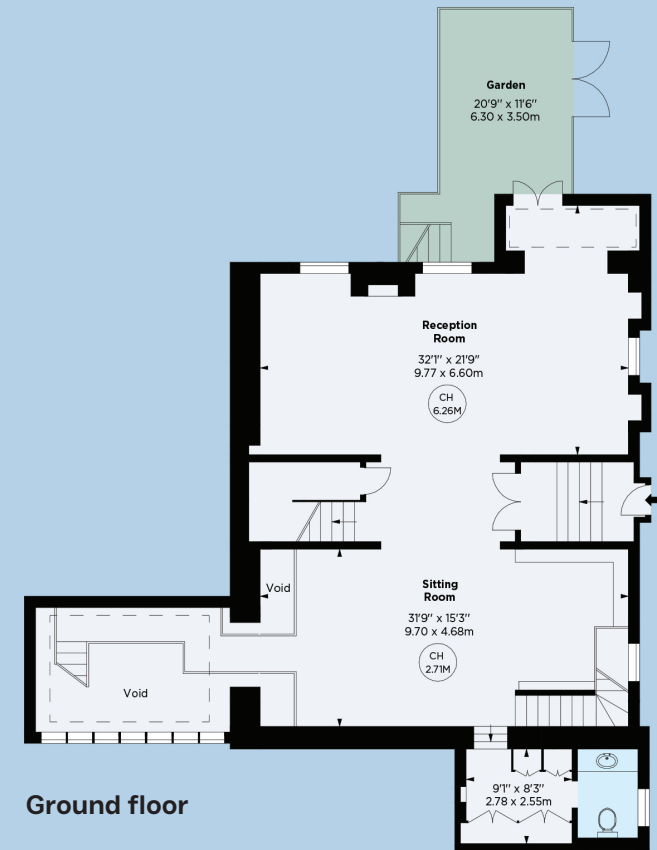
First floor



Second floor



Lower ground floor



Ground floor

FORTIS ADVISORS

Tim Macpherson
07974 201367
tim@fortisadvisors.co

Charles Davis
07525 175274
charles@fortisadvisors.co

7 New Quebec Street
London
W1H 7RH
Tel: 0203 3938133